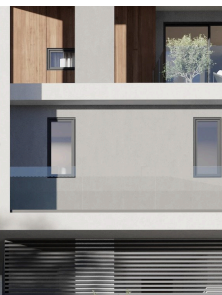


#3969



## CITY PULSE - CONTEMPORARY LIVING

€240,000

The Kalamon Noma deluxe building, strategically positioned in central Larnaca, offers five sophisticated apartments that redefine luxury living. This development showcases exclusive two, three-bedroom apartments and a commercial unit with contemporary designs, seamlessly blending visionary architecture with elegance amidst lush greenery. The central location ensures convenience, charm, and efficient connections throughout the city, making Kalamon Noma an ideal haven for families, couples, and professionals seeking a residence that harmonizes residential living with easy access to city amenities.

Bedrooms



2

Bathrooms



2

Covered



80 m<sup>2</sup>

Energy efficiency rating



A

